

Welcome to the SDA 1 RAC Meeting!



Purpose

SPARK needs you, your time, and your voice.

The purpose of the Regional Advisory Council is to strategically aid and advise SPARK Learning Lab about our services, so we can better support those who support Hoosier children and families.

We know your time is precious and thank you for joining us tonight.



These Hoosiers are worth it...



Meeting Overview

- Review Old Business*
- New Business*
 - SPARK TA Project Director Introduction
 - Nimble x OECOSL Partnership
 - Early Learning Marketplace
 - Infant Early Childhood Mental Health Consultation (IECMHC) model
 - Technology Deployment & Child Care Information Management System Implementation (CCIMS) Support
 - Background Checks
 - Early Care and Education Insights
- Community Comment
- Agreements and Action Items
- RAC Updates from around Indiana
- Agenda Items for Next Meeting
- Adjournment

**Community comment will be heard after each agenda item*

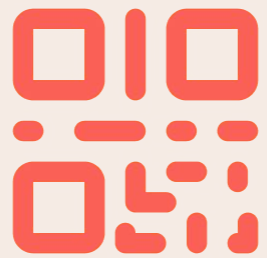
Welcome & Introductions

Please leave in the chat:

- Name
- Organization
- Role
- If you are RAC member



slido



**Join at slido.com
#3762599**

① Start presenting to display the joining instructions on this slide.

slido



RAC Members please sign in by selecting your name from the list.

① Start presenting to display the poll results on this slide.

Review Old Business

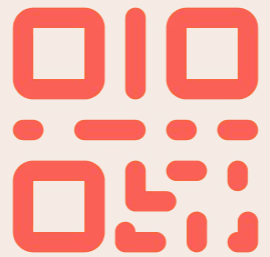
- At the beginning of each meeting, the Council reviews action items and recommendations from the previous meeting and discusses progress made
- View meeting minutes for each SDA on the SPARK website
<http://indianaspark.com/regional-advisory-councils/>

Old Business - Building Wellness Initiative

RAC members request SPARK provide professional development opportunities in the evening for program staff to learn how to build wellness for themselves.

SPARK has worked with ComPsych to identify potential sessions to support program staff building wellness for themselves. Vote using Slido.

slido



**Join at slido.com
#3762599**

① Start presenting to display the joining instructions on this slide.

slido



Please select which sessions you would be interested in attending:

① Start presenting to display the poll results on this slide.

Old Business – Building Wellness Initiative

RAC members request SPARK provide professional development around building wellness at local early care and education conferences

SPARK has been pleased to facilitate informational sessions in partnership with InAEYC CDA classes, at the winter providers fairs hosted by the CCR&Rs, and the InAEYC Indiana Early Childhood Conference. To request SPARK at an event, please use the following: [SPARK Training and Event form](#)

Old Business – Building Wellness Initiative

RAC members request marketing materials to promote the initiative to staff via text and staff meetings that reflects real life scenarios that would promote use of the resources.

Building Wellness “What is it and How do I Promote it?” flier created.



Old Business – I-SAT Rebranding

RAC members provided input on a new name for the I-SAT.

- RAC Members recommended that we not use the word assessment and make the new name fun.
- Now we'll take a poll to choose your favorite name.

slido



Which of the following three names will promote more engagement with the I-SAT?

① Start presenting to display the poll results on this slide.

Old Business – Professional Development Survey

RAC members request parent resources for occupational therapy and speech therapy that are not a school district and broken down by age of child.

SPARK meets with our CCR&R partners monthly and has included this request in discussion items for discovery on potential solutions.

Old Business – Professional Development Survey

RAC members recommend the following to encourage in-person attendance: start after programs close, new topics, multiple locations, keep time zone in mind when scheduling, in person exclusives (training only offered in person), child care provided for those that need it.

SPARK is working to implement some of the recommendations. One example of this is the Lakeshore Trainings that are held in person, over multiple topics and in various times and locations around the state. SPARK encourages all staff to continue to give feedback at the end of training sessions and on the annual PD needs assessment.

Old Business – Professional Development Survey

RAC members request SPARK create “training stacks” for NAFCC providers to receive multiple training hours rather than one hour increments.

SPARK is exploring options that are available on Indiana Learning Paths.

Old Business – Professional Development Survey

RAC members request one website to access licensing and early care and education resources such as Identogo, Training, TB & Physicals, etc.

SPARK will continue to work with our partners on finding a solution.



Old Business

Questions?



New Business

SPARK TA PROJECT DIRECTOR INTRODUCTION



Welcome Phil Maurizi, SPARK TA Project Director

SPARK Learning Lab is proud to welcome our new Technical Assistance (TA) Project Director Phil Maurizi to the team!

Phil is located in the Ft. Wayne area where he lives with his wife Katie and their three children. He comes to SPARK Learning Lab from the Indiana Youth Institute where he has successfully implemented and grown a statewide initiative to ensure children have access to 529 college accounts and funds to support their further education. His project, Promise Indiana, has gained national recognition and is now a model being used in other states. Phil has a Masters degree in Business and has worked with children of all ages in both his professional and personal life.

NIMBLE X DECOSL PARTNERSHIP

Objectives for today

- Share context on OECOSL x Nimble partnership
- Nimble product overview
- Next steps and questions

OECOSL x Nimble: Goals of the partnership

One-stop-shop for educator workforce & hiring needs in Indiana

Benefits for ECE providers:

- Broadens reach to talent
 - ◆ Statewide job board ECE + K12
 - ◆ Third-party platform integrations (e.g., Indeed, ZipRecruiter)
- Candidate-friendly platform with “common application” for jobs statewide
- Streamlines and automates hiring processes

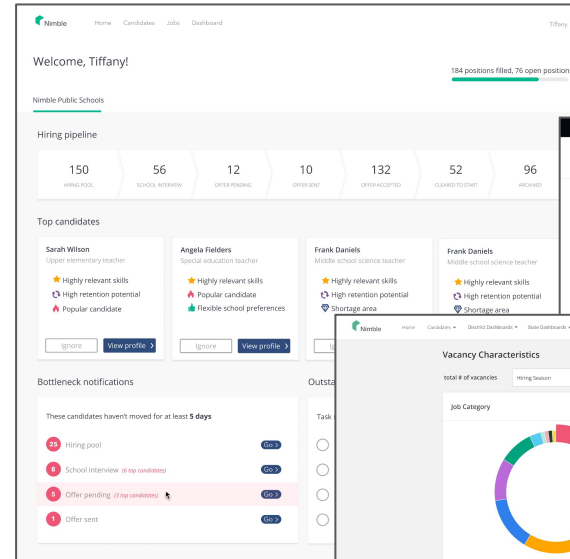
Benefits for IDOE and OECOSL:

- Enables real-time visibility to hiring needs
- Provides data to support decision making

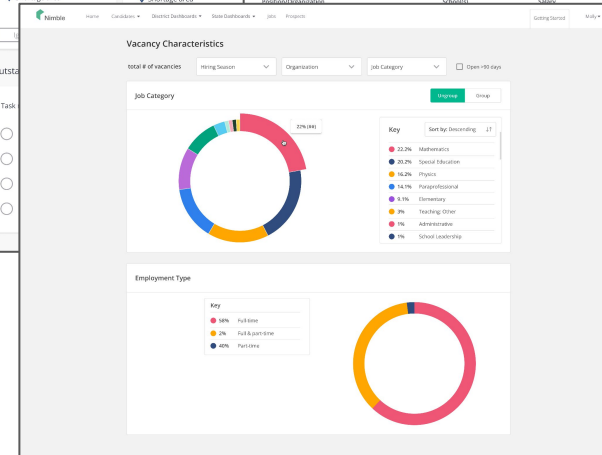
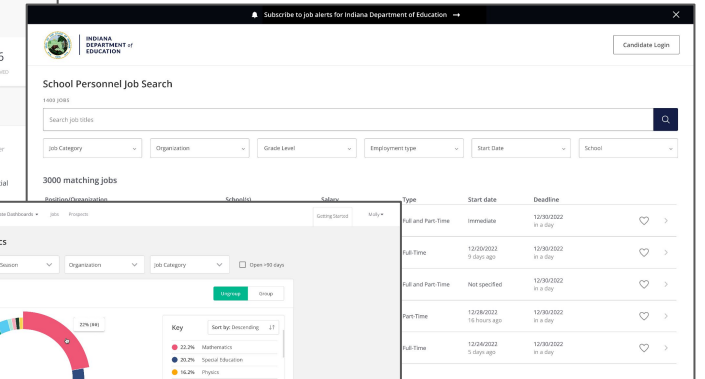
OECOSL x Nimble partnership: Overview

- All standalone ECE providers in IN are eligible to post jobs with Nimble and use the **applicant tracking system (ATS)**
 - First 1800 providers to sign up receive access to Nimble in year 1
 - Providers have option to opt out of Nimble ATS
- OECOSL gains access to **statewide job board** (ECE + K12)
- OECOSL gains access to **dashboards** for statewide visibility of:
 - Staff vacancies for ECE providers
 - Available ECE candidates
- **White glove training** for super users (SPARK Workforce Coordinators) and ECE providers

Nimble ATS

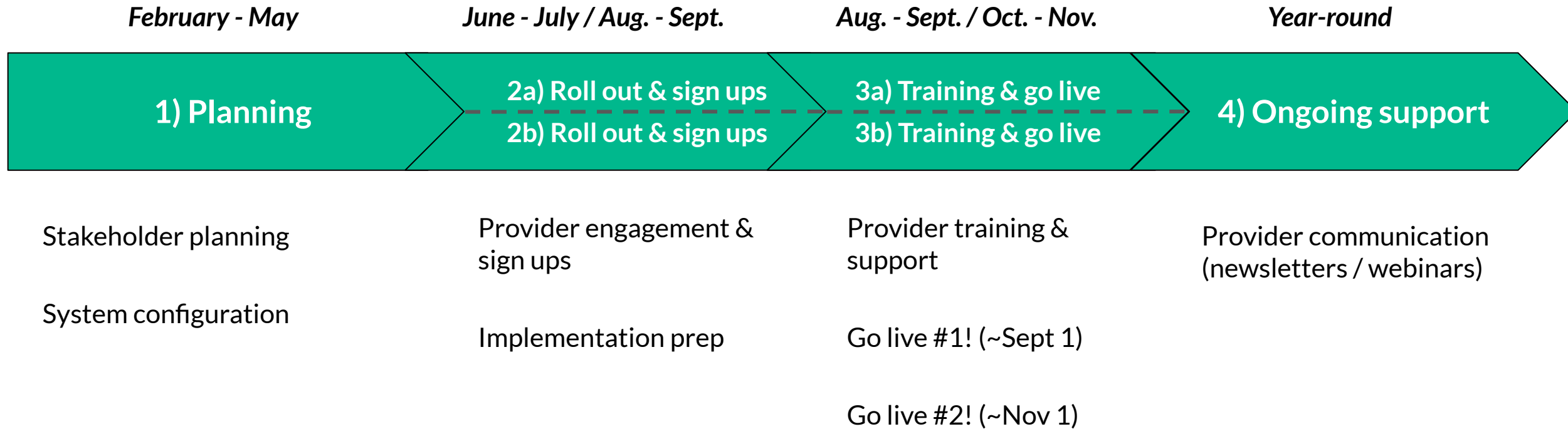


Statewide job board



State dashboards

Implementation plan and timing



Next steps

- Share the OECOSL & Nimble partnership with your networks!
- Be on the lookout for further communication regarding the rollout
 - First 1,800 providers to register will have Nimble access in year 1
- Go live in September!

Questions?



Thank you!

Contact us:

- Nimble point of contact: support@hirenimble.com (shared inbox for fastest response)

EARLY LEARNING MARKETPLACE UPDATE

Early Learning Marketplace

625

Providers with claimed listings

76

Counties represented

4,000+

Indicated openings





Let's Stay Engaged!

- Marketing efforts are ongoing, with active digital and print promotions statewide
- It's never too late to claim your program's profile and begin using the site
- Check your profile frequently for messages from interested families
- Keep your profile current, and update availability and banking regularly for best results

For questions:

FindEarlyLearning.org

marketplace@earlylearningindiana.org

support@wonderschool.com

INFANT EARLY CHILDHOOD MENTAL HEALTH CONSULTATION (IECMHC) MODEL

Introduction of IECMHC

Infant Early Childhood Mental Health Consultation (IECMHC) is a specialized service that provides support and guidance to caregivers, professionals who work with young children (birth to age five), and their families. The goal of IECMHC is to promote healthy social-emotional development and prevent or address mental health concerns in young children.

IECMHC is based on the understanding that healthy social-emotional development is essential to young children's overall well-being and future success. When young children experience adversity or trauma, they may be at risk for developing mental health concerns. IECMHC can help to prevent or address these concerns by providing early intervention and support to children and families.

Introduction of IECMHC

What can Consultation look like?

Consultation typically involves a mental health professional who provides guidance and support to caregivers or professionals who are working with young children. The focus of consultation is on identifying and addressing the child's social-emotional needs and promoting their mental health and well-being. The consultant may offer advice and recommendations on strategies that can help the caregiver or professional support the child's development, and may also provide training or education on topics related to infant and early childhood mental health.



Introduction of IECMHC



What does **SPARK Coaching and Mental Health and Wellness Coaching** look like?

Coaching, on the other hand, typically involves a professional who provides hands-on support to a caregiver or professional who is working with a young child. The focus of coaching is on developing the caregiver or professional's skills and capacity to support the child's development. The coach may model effective strategies and provide feedback and support to the caregiver or professional as they implement these strategies.



Discussion Question - Infant Early Childhood Mental Health Consultation (IECMHC) model

What does Infant Early Childhood Mental Health Consultation mean to you?



Discussion Question - Infant Early Childhood Mental Health Consultation (IECMHC) model

What barriers exist - personally or professionally - to prevent you from reaching out to a Mental Health Consultant?



**TECHNOLOGY DEPLOYMENT
& CHILD CARE
INFORMATION
MANAGEMENT SYSTEM
IMPLEMENTATION SUPPORT**

Exciting Opportunity Coming for Providers...

Why Use Child Care Information Management Systems?

- Suite of digital resources that enable automation of business management tasks specific to child care programs
- Proven to reduce administrative burdens, increase productivity and improve business stability

How Will Programs Be Supported?

- Financial Support
- Product Education
- Business Technology
- Training and Technical Assistance
- In-Program Coaching
- Peer Networking Opportunities

Discussion Question - Technology Deployment & CCIMS Implementation Support

What key messages about Child Care Information Management Software would resonate with programs?



Discussion Question - Technology Deployment & CCIMS Implementation Support

What will programs need from SPARK and other partners to ensure successful adoption and implementation?



BACKGROUND CHECKS

Background Check Committee



- Created committee to focus on background check to lead the performance measure #5 Background Check Proposal Implementation
- Divided work into four categories
 - Partners
 - Content
 - Coaching
 - Communications/Technology
- Met with Lisa Ellis (FSSA) to get her perspective and learn more about obstacles with fingerprinting and paperwork
- Meet weekly to track progress and address obstacles

Discussion Question - Background Checks

Share your ideas to support the background check initiative



EARLY CARE AND EDUCATION INSIGHTS

System and Partner Updates

- Office of Early Childhood and Out-of-School Learning
- SPARK Learning Lab
- Child Care Resource and Referral
- Indiana Association for the Education of Young Children
- Early Learning Indiana
- Infancy Onward
- Indiana Afterschool Network
- Early Care and Education Coalitions
- Early Care and Education Partners



Early Care and Education Insights

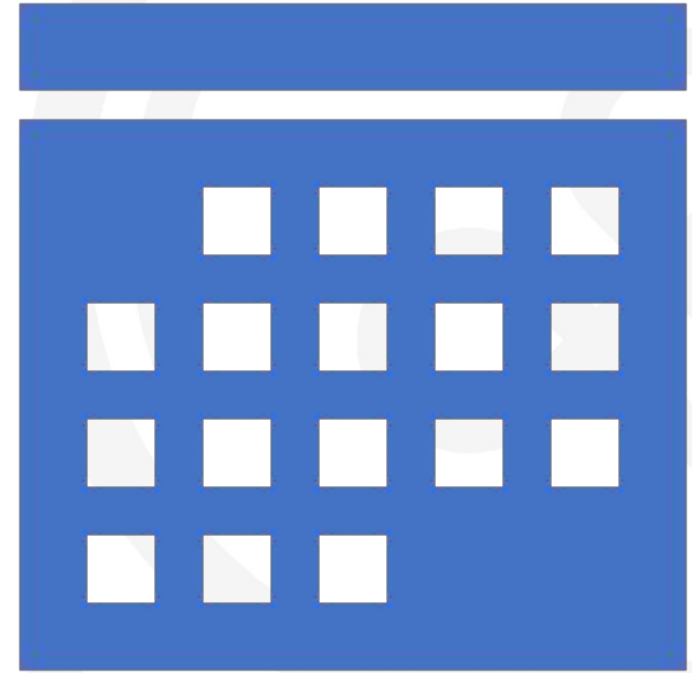
Questions?

RAC INFORMATION

RAC Information

TIME: 7:00 to 9:00 p.m. EST

- September 20, 2023



Community Comment

- We want to hear from you!
- What questions/comments do you have for SPARK and the Council?



Agreements

Based on what has been presented, RAC discussion, and community comment, what suggestions and perspectives need to be captured for SPARK Learning Lab or partners to consider?

- SPARK TA Project Director Introduction
- Infant Early Childhood Mental Health Consultation (IECMHC) model
- Technology Deployment & Child Care Information Management System Implementation (CCIMS) Support
 - Background Checks
 - Early Care and Education Insights

Agenda Items for Next Meeting



What topics and/or SPARK supports would the Council like to discuss in September?

Stay Connected with SPARK

- Sign up for SPARK newsletter: <http://indianaspark.com/>
- SPARK Group Features
- Follow SPARK on social media!
 - [Facebook](#)
 - [Twitter](#)
 - [Instagram](#)
- Email RAC@indianaspark.com with questions



Let's Spark a Conversation!